

THE MAGICAL AND RITUAL USE OF  
**HERBS**

Richard Alan Miller

# Stimulants



## DAMIANA

*A sacrament to improve  
and tone sexuality*

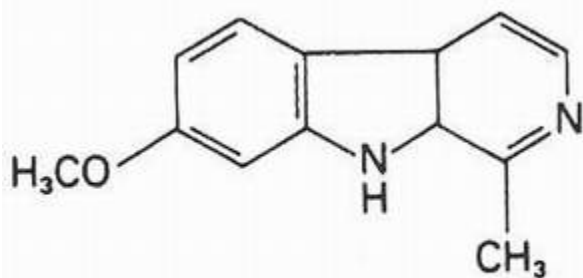
COMMON NAME	PRINCIPAL AGENT	SUGGESTED USE	EFFECT
Juniper	Unknown	Smoke	Hallucinogen
Kava Kava	Kawain, pyrones	Tea	Mild hallucinogen
Kola Nut	Caffeine	Tea	Stimulant
Lobelia	Lobeline	Tea	Mild euphoriant
Mandrake	Scopolamine	Tea	Hallucinogen
Mate	Caffeine	Tea	Stimulant
Mint Bidis	Atropine, scopolamine	Smoke	Mild hallucinogen
Monkshood	Atropine, scopolamine	Ointment	Hallucinogen
Mormon Tea	Ephedrine	Tea	Stimulant
Morning glory seed	Lysergic acid amides	Eat	Strong hallucinogen
Nutmeg	Myristicin	Tea	Mild hallucinogen
Panaeolus mushroom	Psilocybin, psilocin	Eat	Mild hallucinogen
Passionflower	Harmine alkaloids	Smoke or tea	Mild stimulant
Periwinkle	Indole alkaloids	Tea	Hallucinogen

COMMON NAME	PRINCIPAL AGENT	SUGGESTED USE	EFFECT
Pholiotina mushroom	Psilocybin, psilocin	Eat	Strong hallucinogen
Prickly poppy	Isoquinilines, photopine, bergine	Smoke	Narcotic-analgesic
Psilocybe mushroom	Psilocybin, psilocin	Eat	Strong hallucinogen
Scullcap	Unknown	Tea	Tranquilizer
Snakeroot	Reserpine	Tea	Tranquilizer
Stropharia mushroom	Psilocybin, psilocin	Eat	Hallucinogen
Tea	Caffeine	Tea	Stimulant
Thorn apple	Atropine, scopolamine	Smoke or tea	Strong hallucinogen
Tobacco	Nicotine	Smoke	Strong stimulant
Valerian root	Chatinine, valerine	Tea	Tranquilizer
Wild lettuce	Lactucarine	Smoke	Mild narcotic-analgesic
Wormwood	Absinthine	Liqueur	Narcotic-analgesic
Yage	Hamine	Tea	Stimulant-hallucinogen
Yohimbe	Yohimbine	Tea	Mild hallucinogen



## PASSION- FLOWER

*A sacrament for the ritual greeting  
smoke (a marijuana substitute)*

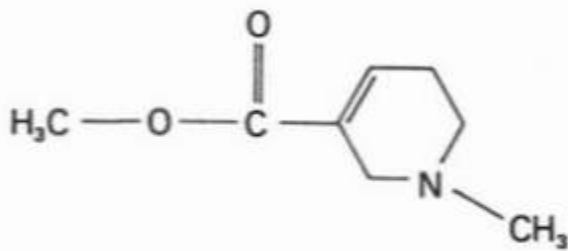


HARMINE

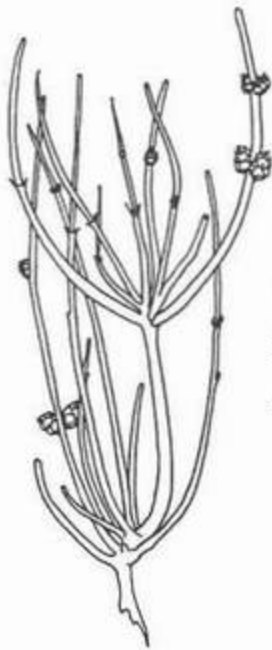


## BETEL NUT

*A sacrament for stimulation during a long journey or for manual labor*

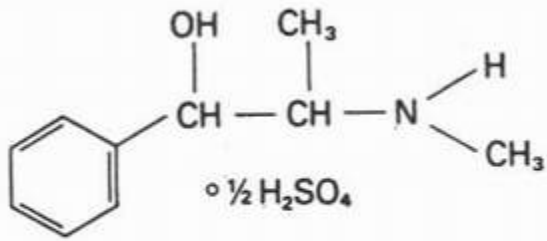


ARECOLINE



## MORMON TEA

*A stimulant sacrament to improve breathing*

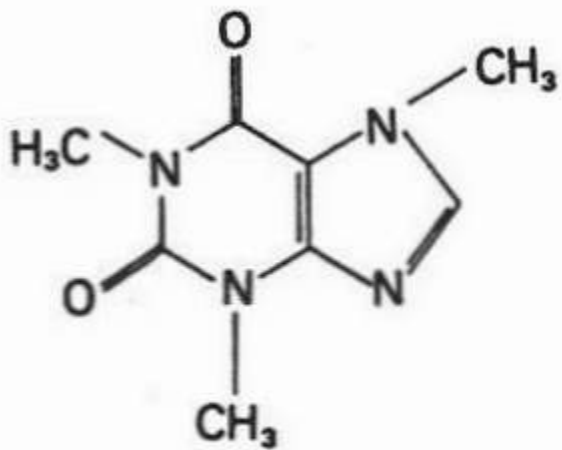


EPHEDRINE SULFATE (MA HUANG)



## GUARANA

*A sacrament for fasting*



CAFFEINE

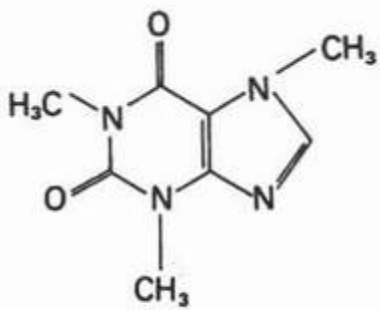


MATÉ

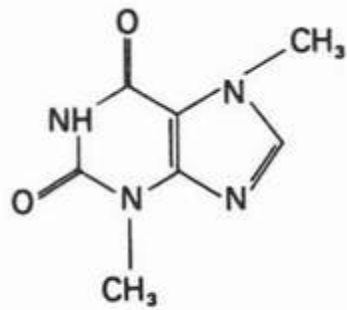


## KOLA NUT

*A sacrament to simulate sexual energies and combat fatigue*



CAFFEINE



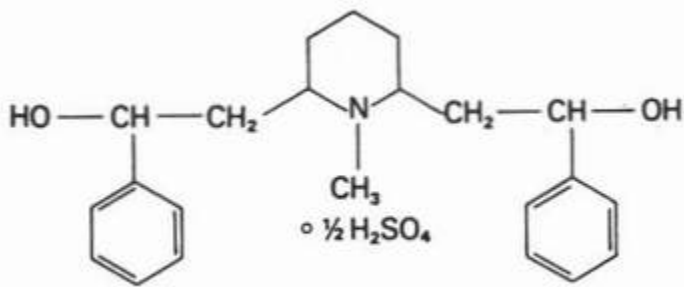
THEOBROMINE

# Depressants



## LOBELIA

*A sacrament used in smoking rituals*



LOBELINE SULFATE (NIKOBAN)



## SCULLCAP

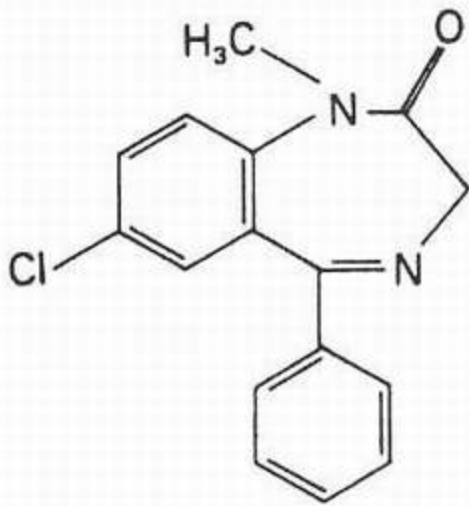
*A sacrament for healing the nerves*



## VALERIAN ROOT

*A sacrament for muscle  
relaxation and massage*





VALIUM

## *Narcotics*





## WILD LETTUCE

*A sacrament for vivid dreams*



## WORMWOOD

*A sacrament for the liqueur after a ritual*

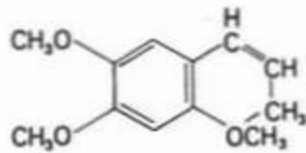
### *Hallucinogens*





## CALAMUS

*A stimulant sacrament, used as a tonic for alleviating fatigue*



1, 2, 4-TRIMETHORY-5-PROPENYLBENZENE (ASARONE)



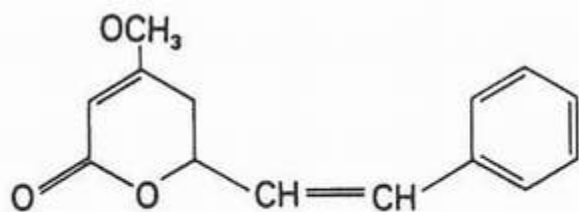
## GALANGAL ROOT

*A mild hallucinogenic sacrament*



## KAVA KAVA

*A sacrament for welcoming  
special guests and friends*

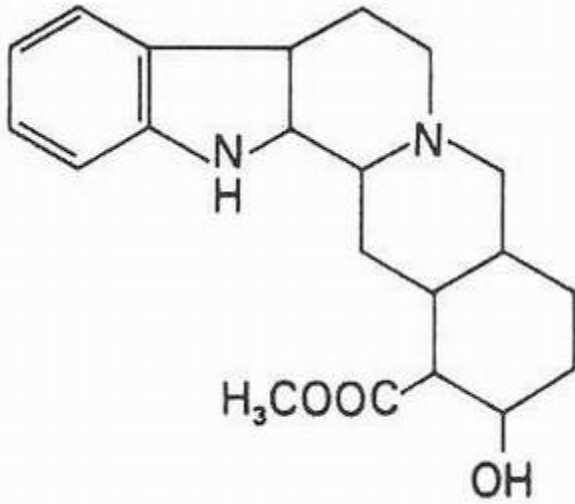


KAWAIN



## YOHIMBE

*A love sacrament for pagan  
matrimony or sexual intercourse*

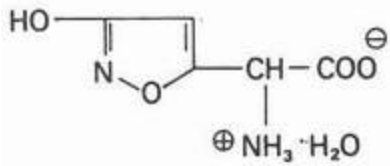


YOHIMBINE

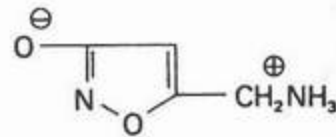
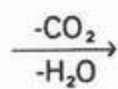


## FLY AGARIC

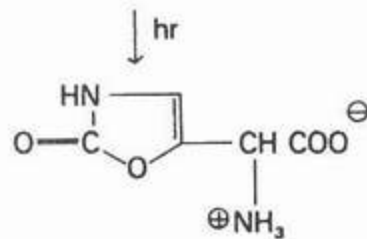
*A sacrament used for initiation  
and spiritual growth*



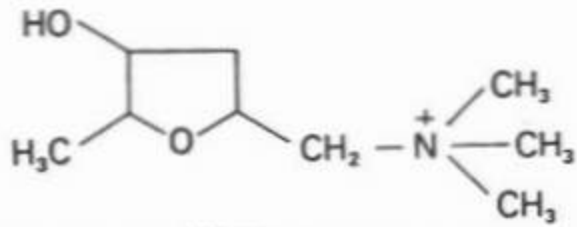
IBOTENIC ACID



MUSCIMOLE



MUSCAZONE

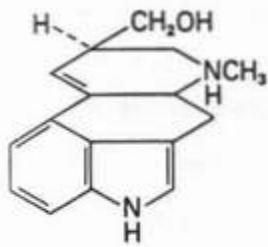


MUSCARINE

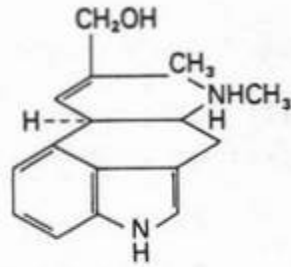


## MORNING GLORY SEED

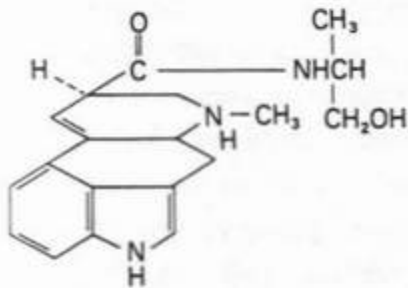
*The sacrament used for death and rebirth;  
increases the ability to reprogram  
attitudes, behavior patterns, and goals*



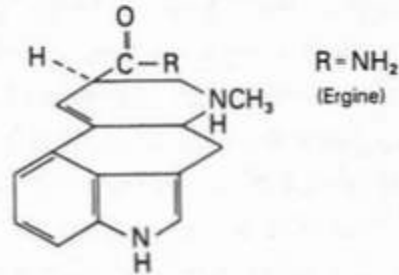
LYSERGOL



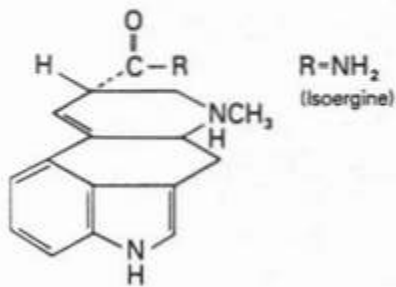
CHANOCLAVINE



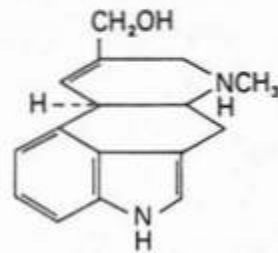
ERGONOVINE



d-LYSERGIC ACID AMIDE



d-ISOLYSERGIC ACID AMIDE



ELYMOCLAVINE



OLOLIUQUI (*RIVEA CORYMBOSA*)—  
A VARIATION OF MORNING GLORY, FROM MEXICO.

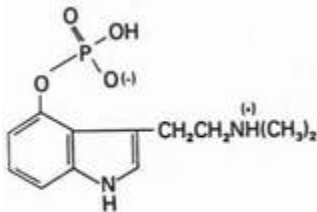


BABY WOOD ROSE

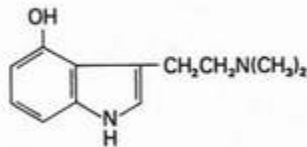


## PSILOCYBE MUSHROOM

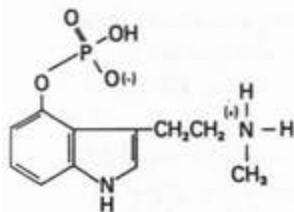
*A sacrament for sex magic rituals,  
love feats, and prophecy*



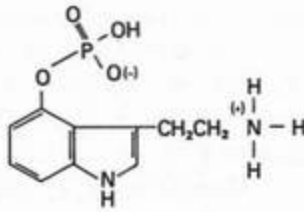
PSILOCYBIN



PSILOCIN

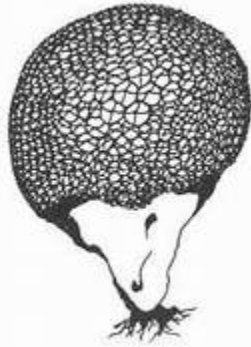


BAEOCYSTIN



NORBAEOCYSTIN



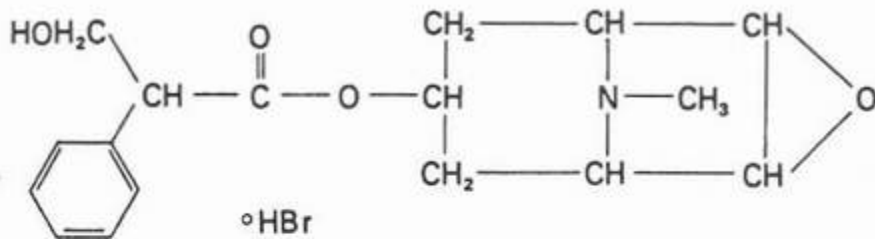


GI'I-SA-WA (*LYCOPERDON MARGINATUM*) Puffball found in the temperate forests of Mexico. Nonvisual hallucinogen. Some related species grow wild in the United States.

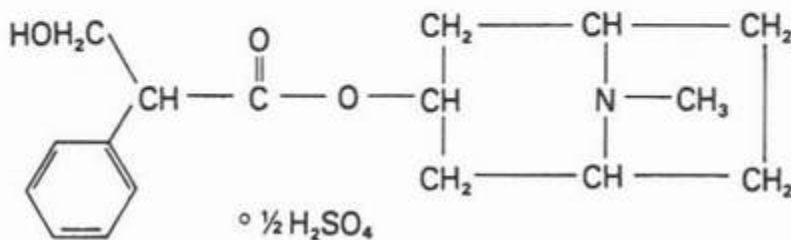


## THORN APPLE

*A sacrament used for astral projection*



SCOPOLAMINE HYDROBROMIDE (HYOSCINE)



ATROPINE SULFATE (TINCTURE OF BELLADONNA)



BELLADONNA



HENBANE



MANDRAKE

## QUICK REFERENCE CHART

*Most of the botanicals described in this book are legal today.*

COMMON NAME	PRINCIPAL AGENT	SUGGESTED USE	EFFECT
Belladonna	Atropine, scopolamine	Ointment	Strong hallucinogen
Betel nut	Arecoline	Chew as plug	Stimulant
Broom, Scotch broom	Cytisine	Smoke	Strong sedative
Bufotenin	Bufotenin	Ointment	Hallucinogen
Caapi	Harmin	Tea	Stimulant
Calamus	Asarone	Eat	Mild hallucinogen
California poppy	Glucides	Smoke	Mild euphoriant
Catnip	Nepetalactone	Tea	Mild hallucinogen
Cinnamon	Unknown	Smoke	Mild stimulant
Choba	Bufotenin	Ointment	Hallucinogen

COMMON NAME	PRINCIPAL AGENT	SUGGESTED USE	EFFECT
Coffee	Caffeine	Brew	Stimulant
Conocybe mushroom	Psilocybin, psilocin	Eat	Mild hallucinogen
Copelandia mushroom	Psilocybin, psilocin	Eat	Mild hallucinogen
Damiana	Unknown	Smoke	Mild stimulant
Ephedra	Ephedrine	Tea	Stimulant
Fly agaric	Muscimole, muscarine	Eat	Strong hallucinogen
Galangal root	Rhizome	Tea	Mild hallucinogen
Guarana	Caffeine	Tea	Strong stimulant
Harmine	Harmine	Tea	Stimulant
Hawaiian wood rose	Lysergic acid amides	Eat	Strong hallucinogen
Henbane	Atropine, scopolamine	Ointment	Hallucinogen
Hops	Lupuline	Tea	None
Hydrangea	Hydrangin, cyanogenes, saponin	Smoke	Stimulant
Iboga	Ibogaine, ibogamine	Tea	Stimulant